

From the outside, rainbow-colored villas present pastel hues that recall the Caribbean. Inside, each is a three- or four-floor structure with a central staircase that opens to individual guest rooms.



The Boardwalk Villas at the Grand Pavilion

Wild Dunes



### Accommodations:

Guest rooms, (B,C,D), are accessed by a centrally located, closed-in staircase and feature:

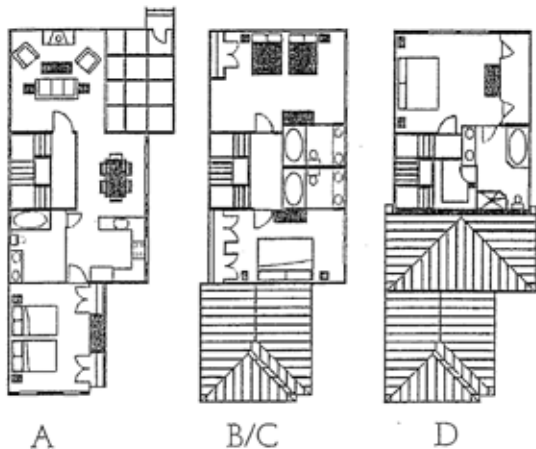
- separate security lock and keys
- private bath
- remote control TV
- telephone with voice mail
- coffee maker
- access to centrally located laundry

One-bedroom suite, (A), features all of the above, plus:

- full kitchen
- living and dining rooms
- open deck

### Location:

- In the heart of our 1,600-acre resort
- Steps from The Boardwalk Inn
- Walking distance to the Island House Conference Center
- Adjoins The Grand Pavilion with its two oceanfront pools, beachside volleyball court and Cabana Bar & Grill, (seasonal)
- Walking distance to Harbor Golf Course, Tennis Center and Dunes Deli & Pizzeria



The floor plans shown here are typical and not to scale. Interior decor is professionally selected, and personalized by the individual owners.

### Heating & Air Conditioning:

Due to the nature of the design of the Boardwalk Villas, some rooms have full control over their heating and cooling, while others have only zoned-control. For those with zoned-control, this means that if the AC for the upper floor is running, you can control the flow of cool air to your room. As well, if the heat is running on the upper floor, you can control the flow of warm air to your room. You cannot, however, control which system, heating or cooling, is operating.

Likewise, for those with full control over the airflow, we ask that you be mindful of others, especially at night and when leaving the room. Should you have additional questions, please dial "0" for the resort operator.

